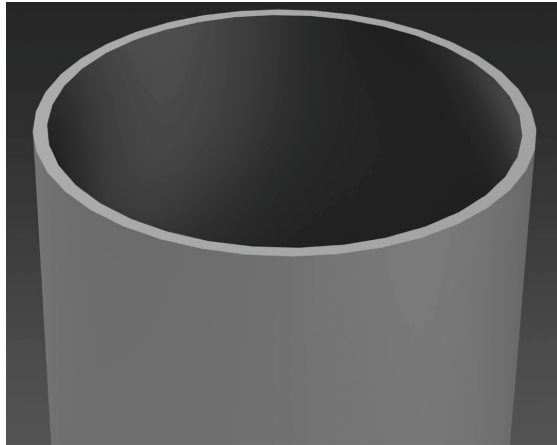


NLS-RSSP-WG
Round Straight Steel Pole



Avail. Size

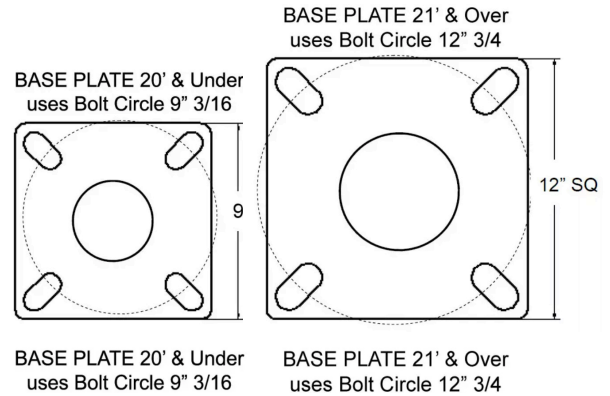


Customer Name: _____

Project Name: _____

Note: _____

Type: _____



Height:

- 10' - 30'

Pole Shaft:

- The pole shaft material is a weldable grade hot rolled commercial quality steel tubing with a minimum yield of 46,000 psi. Conforms to ASTM A500 Grade B Standards. Poles have ground lug welded inside hand-hole opposite side of the hand-hole. Pole shaft is welded to base plate on top and bottom of base plate.

Base Plate:

- The Base Plate is manufactured from structural hot rolled steel that meets or exceeds a minimum yield strength of 36,000 psi, conforms the ASTM-A36 standards. Base Plate vary in size from 1" thick for poles 21 feet and over, 3/4" thick for poles 10 to 20 feet.

Anchor Bolts:

- All anchor bolts are hot dipped galvanized steel and come with two galvanized nuts and washers per bolt. Minimum yield strength 50,000 psi. Anchor bolts are not included for Custom Bolt Circle.

Base Cover:

- All base covers are fabricated two-piece 6063 aluminum and powder coated to match the pole. Square base cover comes standard, Round base cover optional.

Hand-Hole:

- A reinforced hand-hole is 12" on center from the base plate and is constructed of 3"x 5" rectangular steel tubing which is welded to pole shaft for added strength. The hand-hole covers are provided with internal bridge support and powder coated to match pole finish

Pole Cap:

- All poles come with a removable polymer pole cap installed. All pole caps are black finish.

Finish:

- All poles are treated with shot blast media for a near white finish, power blasted with 100 psi prior to powder coat application. Electrostatically applied polyester powder coat with a 3 to 5 mil thickness for maximum adherence.

Marine Grade Finish:

- All poles are washed through a 5-stage cleaning system with a deionized rinse, a 3 to 5 mils zinc rich durable polyester primer powder coat, followed by a 3 to 5 mils super durable polyester powder coat finish.

Galvanized Finish:

- All poles are Hot Dipped Galvanized in a multi stage process. Galvanizing Specification, Zinc (Hot Dipped Galvanized) per ASTM A 123/A 123M - 02
- Zinc coatings on threaded materials shall conform to specification A 153 /A 153M. The coating shall be continuous and reasonably smooth and uniform in thickness and in weight.
- Galvanizing Adherence - The Zinc coating shall withstand handling consistent with the nature and thickness of the coating and normal use of the article without peeling or flaking.

Galvanized Under Powder:

- Galvanized Under Powder (GUP) adheres to above galvanized specification, and the second stage is a light sand blast on the outside of the pole, third stage is a 3-5 mils polyester powder coat finish for maximum adherence.

Vibration Dampener:

- The Vibration Dampener is factory installed. The Vibration Dampener consists of a rugged galvanized chain coated with heavy duty polyester tubing that is factory secured at the bottom 2-3rds of the pole and field secured by contractor at the base during installation.



Sample Ordering

Model	Height	Pole Dimension	Gauge	Base Pattern	Mounting	Color	Bolts	Options
SSAP								
Round Straight Steel Pole (RSSP)	10' (10) 12' (12) 14' (14) 16' (16) 18' (18) 20' (20) 22' (22) 24' (24) 25' (25) 26' (26) 28' (28) 30' (30)	4" Round (4R) 5" Round (5R) 6" Round (6R)	.120 Wall Thickness (11G) .180 Wall Thickness (7G)	(10'-20') 9" - 10 3/8" Bolt Circle (9BC) (22'-30') 11 1/2" - 14" Bolt Circle (12BC) Custom Bolt Circle (CBC) * Consult Factory	Single (SGL) Double (D-90) (D-180) Triple (T-90) (T-120) Quad (QD) No Drill (ND) *Tenon Option Tenon 2 3/8" Round (T2R) 3" Round (T3R) 3 1/2" Round (T312R) 4" Round (T4R) 4 1/2" Round (T412R)	Bronze Textured (BRZ) White Textured (WHT) Smooth White Gloss (SWT) Silver (SVR) Green Textured (GRN) Hunter Green Textured (HGN) Black Textured (BLK) Smooth Black Gloss (SBK) Graphite Textured (GPH) Grey Textured (GRY) Custom (CS)	3/4" x 30" (3430) 1" x 36" (136) Less Anchor Bolts (LAB)	GFI Kit (GFI20A) 20 Amp Weather Proof Receptacle GFI Provision Only (PROV) Galvanized (GLV) Round Base Cover (RBC) Galvanized Under Powder (GUP) 1/2" Coupling (COUP) * Specify Location Vibration Dampener (VD) Extra Hand Hole (XHH) * Specify Location Marine Grade Finish (MGF)

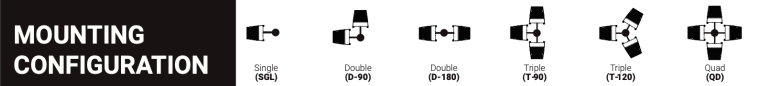
Max. allowable EPA - SSAP poles (per AASHTO LRFDLTS-1)

MODEL NO.	Shaft Length ft	Wall thickness in'	Shaft dia. in.	Base Plate, in	Bolt Circle, in	Bolt	80 mph	Max. wt (lb)	90 mph	Max. wt (lb)	100 mph	Max. wt (lb)	110 mph	Max. wt (lb)	115 mph	Max. wt (lb)	120 mph	Max. wt (lb)	130 mph	Max. wt (lb)	140 mph	Max. wt (lb)	150 mph	Max. wt (lb)	160 mph	Max. wt (lb)	170 mph	Max. wt (lb)	180 mph	Max. wt (lb)
RSSP-10-4R-11G-9BC-3430	10	0.120	4	9"sq	9	3/4"x20"	20	500	20	500	20	500	20	500	18.3	458	16.6	416	13.9	347	11.7	292	10	250	8.7	217	7.6	190	6.8	169
RSSP-12-4R-11G-9BC-3430	12	0.120	4	9"sq	9	3/4"x20"	20	500	20	500	20	500	16.1	402	14.5	363	13.1	329	10.8	270	9	225	7.6	190	6.6	165	5.7	143	5	126
RSSP-14-4R-11G-9BC-3430	14	0.120	4	9"sq	9	3/4"x20"	20	500	20	500	16.4	409	13	326	11.7	292	10.5	262	8.5	213	7	174	5.8	145	4.9	124	4.3	108	3.7	93
RSSP-16-4R-11G-9BC-3430	16	0.120	4	9"sq	9	3/4"x20"	20	500	16.3	408	12.6	316	9.9	247	8.8	220	7.8	199	6.2	156	4.9	124	4	100	3.4	85	2.9	73	2.5	63
RSSP-18-4R-11G-9BC-3430	18	0.120	4	9"sq	9	3/4"x20"	18.3	458	13.7	344	10.4	261	8	201	7.1	177	6.2	154	4.8	119	3.6	91	2.8	70	2.3	60	2	60	1.6	60
RSSP-20-4R-11G-9BC-3430	20	0.120	4	9"sq	9	3/4"x20"	15.7	393	11.6	289	8.6	216	6.5	162	5.5	139	4.8	120	3.5	88	2.6	62	1.8	60	1.4	60	1.1	60	0.9	60
RSSP-20-4R-7G-9BC-3430	20	0.188	4	9"sq	9	3/4"x20"	20	500	19.6	489	15.1	378	11.8	294	10.5	262	9.3	232	7.3	183	5.7	144	4.6	116	3.9	98	3.3	84	2.9	72
RSSP-20-5R-11G-9BC-3430	20	0.120	5	9"sq	9	3/4"x20"	20	500	19.7	491	14.9	374	11.5	288	10.1	253	9	226	7.4	186	6.2	156	5.2	131	4.5	112	3.8	96	3.3	83
RSSP-20-5R-7G-9BC-3430	20	0.188	5	9"sq	9	3/4"x20"	20	500	20	500	20	500	16.2	406	14.4	361	13	325	10.8	271	9.1	228	7.8	195	6.7	167	5.8	146	5.1	127
RSSP-22-4R-11G-12BC-136	22	0.120	4	12"sq	12	1"x36"	12.3	308	8.9	222	6.4	161	4.6	115	3.9	97	3.2	80	2.1	60	1.3	60	0.7	60	0.5	60	0.3	60	0.1	60
RSSP-22-4R-7G-12BC-136	22	0.188	4	12"sq	12	1"x36"	20	500	15.6	389	11.8	295	9	226	8	199	7	174	5.3	133	4	100	3.1	77	2.6	64	2.2	60	1.8	60
RSSP-22-5R-11G-12BC-136	22	0.120	5	12"sq	12	1"x36"	20	500	15.4	385	11.5	287	8.6	215	7.5	187	6.6	164	5.4	134	4.4	110	3.7	92	3.1	77	2.6	65	2.2	60
RSSP-22-5R-7G-12BC-136	22	0.188	5	12"sq	12	1"x36"	20	500	20	500	20	500	15.8	396	14.1	351	12.7	316	10.5	263	8.9	221	7.5	188	6.5	162	5.6	140	4.9	122
RSSP-25-4R-11G-12BC-136	25	0.120	4	12"sq	12	1"x36"	9.7	242	6.7	167	4.5	112	2.9	72	2.3	60	1.7	60	0.7	60	0	-	0	-	0	-	0	-	0	-
RSSP-25-4R-7G-12BC-136	25	0.188	4	12"sq	12	1"x36"	17.1	428	12.5	313	9.3	231	6.8	170	5.8	145	5	124	3.5	88	2.4	60	1.6	60	1.2	60	0.9	60	0.7	60
RSSP-25-5R-11G-12BC-136	25	0.120	5	12"sq	12	1"x36"	16.9	423	12.1	302	8.7	217	6.2	154	5.1	128	4.4	110	3.5	87	2.7	68	2.2	60	1.7	60	1.4	60	1.1	60
RSSP-25-5R-7G-12BC-136	25	0.188	5	12"sq	12	1"x36"	20	500	20	500	16.4	409	12.5	312	10.9	272	9.7	243	8.0	200	6.7	167	5.6	140	4.8	119	4	101	3.5	87
RSSP-26-4R-11G-12BC-136	26	0.120	4	12"sq	12	1"x36"	8.9	222	6	150	3.9	98	2.4	60	1.7	60	1.2	60	0.3	60	0	-	0	-	0	-	0	-	0	-
RSSP-26-4R-7G-12BC-136	26	0.188	4	12"sq	12	1"x36"	16.1	401	11.6	290	8.5	212	6.2	154	5.2	130	4.4	109	3	74	1.9	60	1.2	60	0.8	60	0.6	60	0.3	60
RSSP-26-5R-11G-12BC-136	26	0.120	5	12"sq	12	1"x36"	13.3	333	11.1	278	7.9	196	5.4	135	4.4	111	3.7	93	2.9	72	2.3	60	1.8	60	1.4	60	1.1	60	0.8	60
RSSP-26-5R-7G-12BC-136	26	0.188	5	12"sq	12	1"x36"	12.1	302	16.1	403	13.9	247	11.5	287	10	249	8.9	222	7.3	182	6	150	5	125	4.2	106	3.6	89	3.1	77
RSSP-28-4R-7G-12BC-136	28	0.188	4	12"sq	12	1"x36"	14.1	353	10	250	7.1	177	4.9	122	4	100	3.3	82	2.0	60	1	60	0.3	60	0.1	60	0	-	0	-
RSSP-28-5R-11G-12BC-136	28	0.120	5	12"sq	12	1"x36"	13.6	341	9.4	234	6.3	158	4	101	3.1	78	2.5	63	1.8	60	1.3	60	0.9	60	0.6	60	0.4	60	0.2	60
RSSP-28-5R-7G-12BC-136	28	0.188	5	12"sq	12	1"x36"	20	500	17.8	455	13.9	329	9.7	242	8.3	207	7.2	181	5.9	147	4.8	120	3.9	98	3.2	81	2.7	68	2.3	60
RSSP-28-6R-7G-12BC-136	28	0.188	6	12"sq	12	1"x36"	20	500	20	500	20	500	17	425	15.4	385	14	349	11.6	290	9.7	243	8.2	206	7.1	177	6.1	152	5.3	132
RSSP-30-5R-11G-12BC-136	30	0.120	5	12"sq	12	1"x36"	11.7	293	7.8	194	4.9	122	2.8	69	1.9	60	1.4	60	0.8	60	0.4	60	0.1	60	0	-	0	-	0	-
RSSP-30-6R-11G-12BC-136	30	0.120	6	12"sq	12	1"x36"	18.6	466	12.9	321	9	225	7	175	6.2	154	5.5	136	4.3	108	3.5	87	2.8	69	2.2	60	1.8	60	1.4	60
RSSP-30-5R-7G-12BC-136	30	0.188	5	12"sq	12	1"x36"	20	500	15.6	391	11.3	282	8.1	201	6.8	169	5.8	146	4.6	115	3.7	92	3	74	2.4	60	1.9	60	1.5	60
RSSP-30-6R-7G-12BC-136	30	0.188	6	12"sq	12	1"x36"	20	500	18.6	465	14.9	371	13.4	334	12.1	303	10	250	8.3	208	7	176	6	149	5.1	127	4.4	110	-	-

*Pole Assemblies With EPA-9.0 Require Specific Review

***Anchor Bolts are NOT included with Custom Bolt Circle.
Do NOT pour concrete referencing this drawing. Consult Factory.**

***All wind loading calculations are based on sustained wind force plus an additional 1.3 gust.**



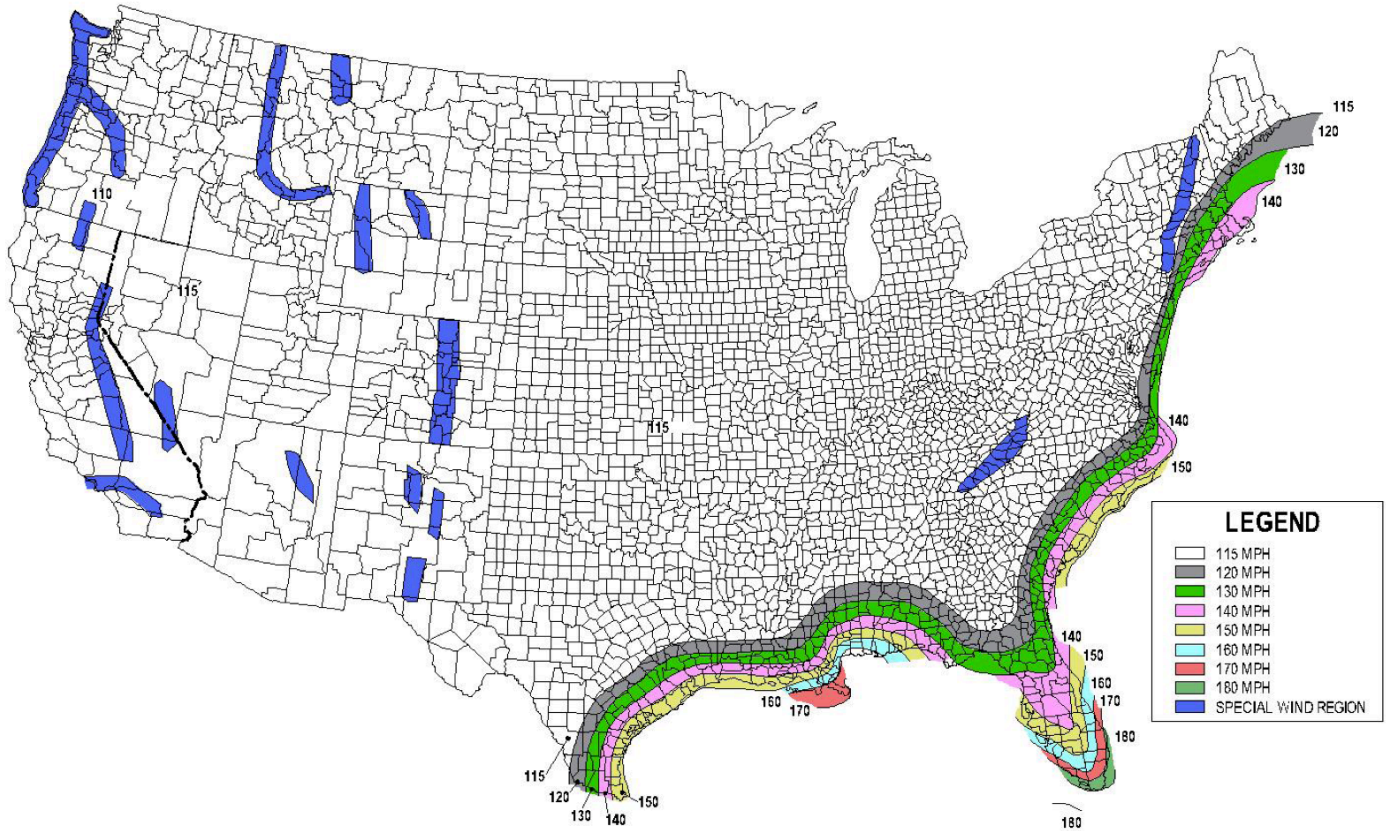
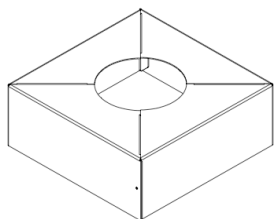
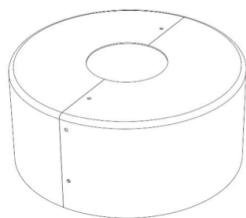


FIG. 3.8-1b - 700-Year MRI Basic Wind Speed, mph (AASHTO LRFDLTS-1)

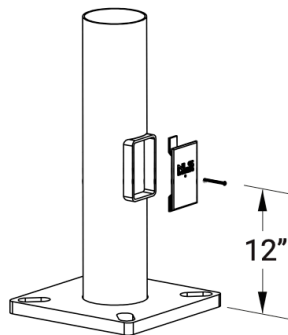
- 1) All wind load calculations are based on sustained wind force plus and additional 1.3 gust
- 2) Wind Map is to be used as a reference only. Please coordinate with local agencies for further review.
- 3) Wind Map values are based on a 50 year mean recurrence. These values do not account for severe conditions, such as hurricanes, tornadoes, etc...
- 4) For review of poles with additional configurations (arms, banners, shorter/longer pole lengths, etc...), please contact factory.



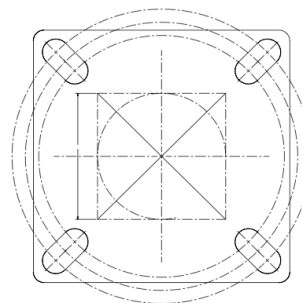
Base Cover



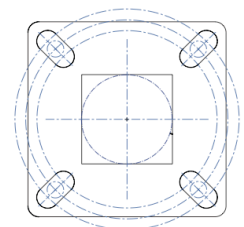
Optional Round Base Cover



Base Detail



12" Base Detail



9" Base Detail

